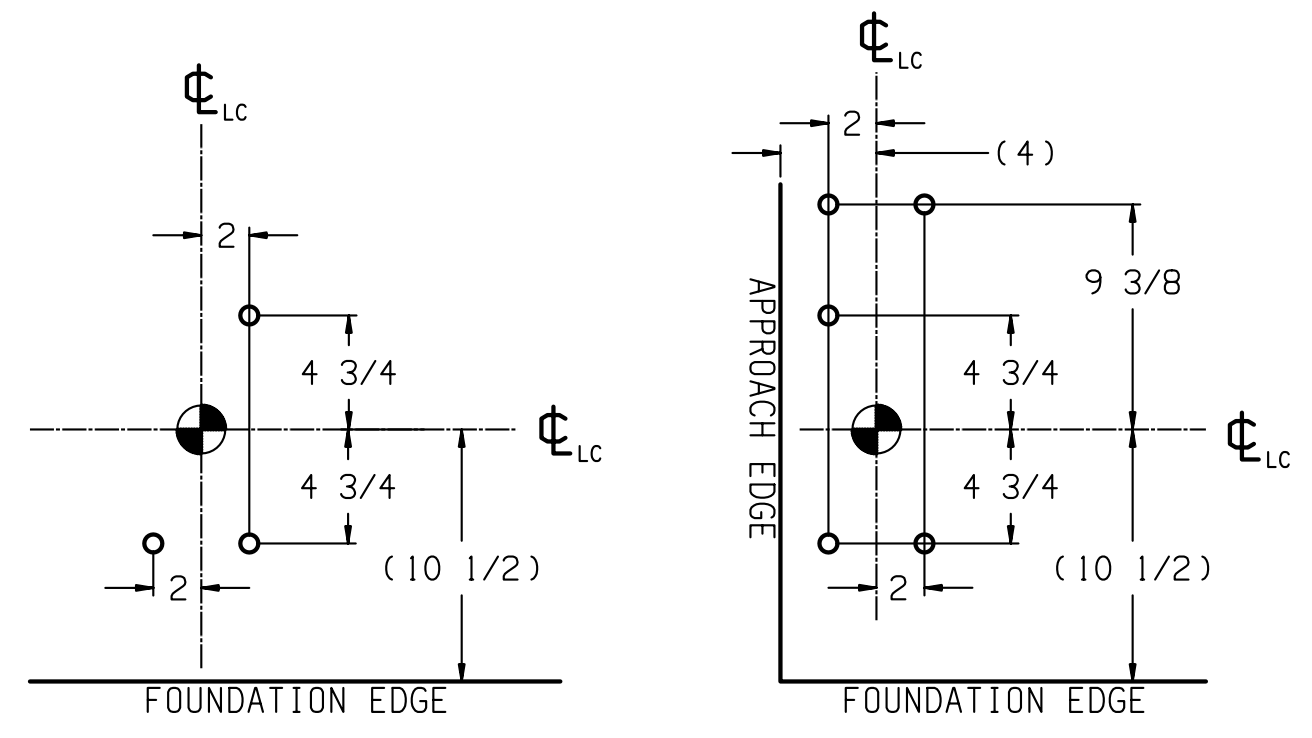
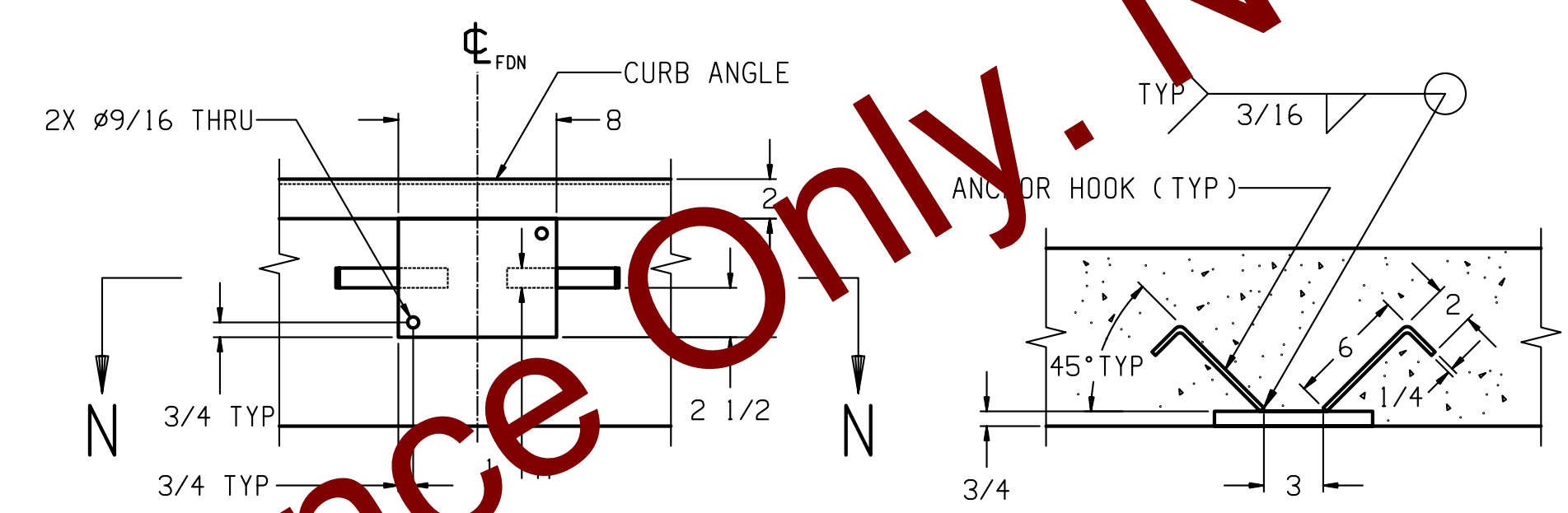


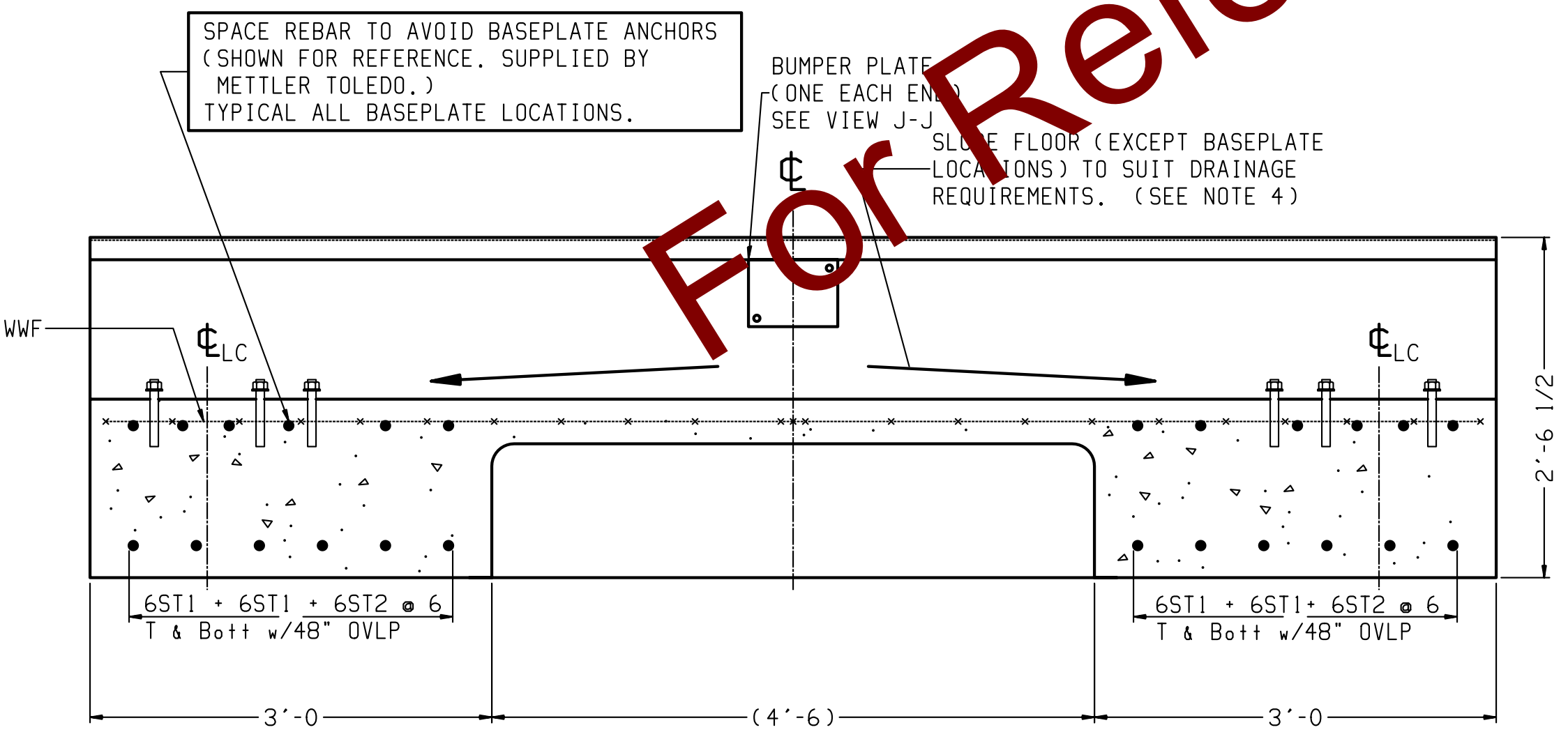
SECTION A-A



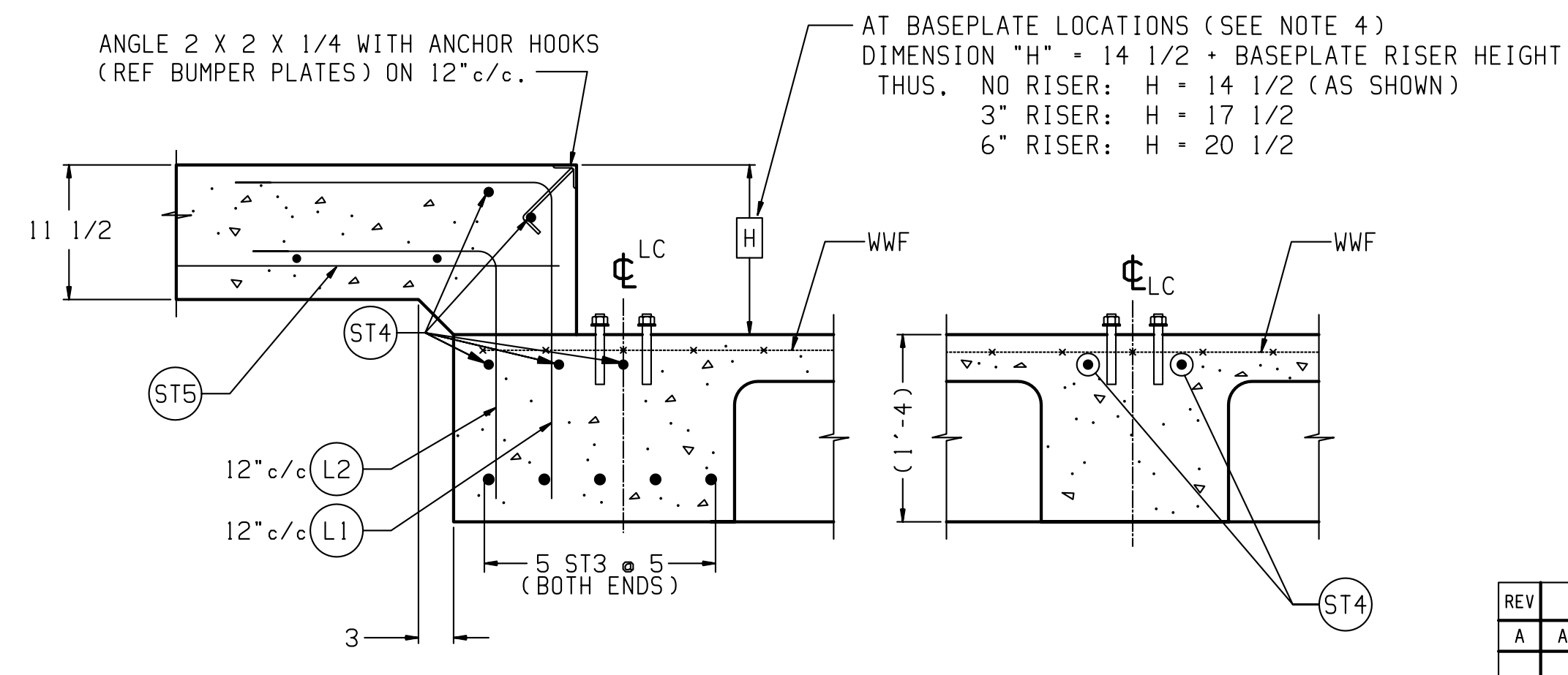
DETAIL "L" ANCHOR LOCATIONS (OTHER SIDE IS OPPOSITE)
DETAIL "K" ANCHOR LOCATIONS (OTHER SIDE IS OPPOSITE)



VIEW J-J
SECTION N-N



SECTION B-B



SECTION C-C (TYPICAL END WALL)
SECTION D-D (TYPICAL FOOTER) SINGLE BASEPLATE

REINFORCING STEEL SCHEDULE (A.S.T.M. A-615 GRADE 60)						
COLD FORM BARS TO INSIDE DIMENSIONS		A B				
		SYM	QTY	SIZE	LOCATION, DIRECTION	WGT
ST1	48	#6			FLOOR BEAMS, LONG.	2884
ST2	24	#6			FLOOR BEAMS, LONG.	339
ST3	10	#6			END FOOTERS, LATERAL	150
ST4	10				ENDS, LATERAL	104
	20	#5			APPROACHES, LATERAL	209
	6				FOOTERS, LATERAL	63
ST5	20	#5			APPROACHES, LONG.	198
L1	20	#5			APPROACH TO END TIES	94
L2	20	#5			APPROACH TO END TIES	74

L1 & L2 GIVEN WITHOUT RISER BASEPLATES. DIMENSION "B" WILL VARY WITH THE ACTUAL HEIGHT OF RISERS USED, AS FOLLOWS:

	L1	L2
NO RISERS	2'-3"	1'-9"
3" RISERS	2'-6"	2'-0"
6" RISERS	2'-9"	2'-3"

MATERIAL SUMMARY	
CONCRETE (CU. YDS.)	37
REINFORCING STEEL (LBS)	4015
WWF: 6x6-W1.4xW1.4 (SQ. FT.)	840

- NOTES:**
- 1) USE MINIMUM 3000 PSI STRENGTH CONCRETE AT 28 DAYS WITH 5-7% AIR ENTRAINMENT.
 - 2) USE MINIMUM 60KSI YIELD DEFORMED REINFORCING STEEL. REBAR MINIMUM DEPTH OF COVER SHOULD BE IN ACCORDANCE WITH THE LATEST ACI BUILDING CODE REQUIREMENTS FOR STRUCTURAL CONCRETE (ACI 318-SECTION 7.7), UNLESS OTHERWISE SPECIFIED.
 - 3) FOUNDATION REQUIRES 1500 PSF RATED SOIL.
 - 4) TOP OF CONCRETE AT BASEPLATE LOCATIONS TO BE LEVEL AND IN ONE PLANE $\pm 1/8"$.
 - 5) DIAGONAL MEASUREMENTS ENDWALL TO ENDWALL MUST BE EQUAL WITHIN $1/2"$.
 - 6) BASEPLATES ANCHORS TO BE SUPPLIED BY METTLER TOLEDO. USE BASEPLATES AS TEMPLATES TO LOCATE ANCHORS DURING SCALE INSTALLATION.
 - 7) RAMP LENGTH: -PER LOCAL REGULATIONS
-1/2" SLOPE PER FOOT TYPICAL
 - 8) CONDUIT LOCATIONS MAY VARY BASED ON APPLICATION, AS LONG AS IT DOES NOT INTERFERE WITH BASE PLATE OR ANCHOR LOCATIONS. ON ABOVE GROUND INSTALLATIONS, THE CONDUIT MAY BE RUN ALONG THE SIDE OF THE FOUNDATION. PLEASE CHECK FOR LOCAL CODE REQUIREMENTS REGARDING CONDUIT PLACEMENT
 - 9) CONTRACTOR SUPPLIES:
 - EXCAVATION
 - REINFORCING STEEL
 - CURB ANGLE ASSEMBLIES (SECT C-C)
 - CONCRETE AND FORMS
 - 1 1/2" DIA CONDUIT
 - BUMPER PLATE ASSEMBLIES (VIEWS J-J & N-N)

DRAWING IS TO SCALE ONLY WHEN BORDER MEASURES 22-7/8" X 35" (FULL SIZE)

REV	CHANGE	BY	DATE	SCALE .02	DATE 7/11/00	METTLER TOLEDO
A	ADDED VT5231, PDX DETAIL, AND CONDUIT NOTE	KRS	01/31/11	DRN HBW APPD		
						TITLE VT5231/7562C FOUNDATION: BEAM SLAB 80' X 10', WITH 20' MODULES
						UNLESS OTHERWISE SPECIFIED, ALL DIMENSIONS ARE IN INCHES, AND DIMENSIONAL TOLERANCES ARE: FRACTIONAL .XX $\pm .02$ DECIMAL .XXX $\pm .005$ ANGULAR $\pm .5^\circ$
						THIS PRINT IS FURNISHED WITH THE UNDERSTANDING THAT THE ESSENCE THEREOF WILL NOT BE REPRODUCED IN WHOLE OR IN PART WITHOUT WRITTEN AUTHORIZATION OF METTLER-TOLEDO, INC. ALL DESIGNS ARE THE PROPERTY OF METTLER-TOLEDO, INC. AND WILL BE PROTECTED BY PATENTS.
						TC203840
						REV A